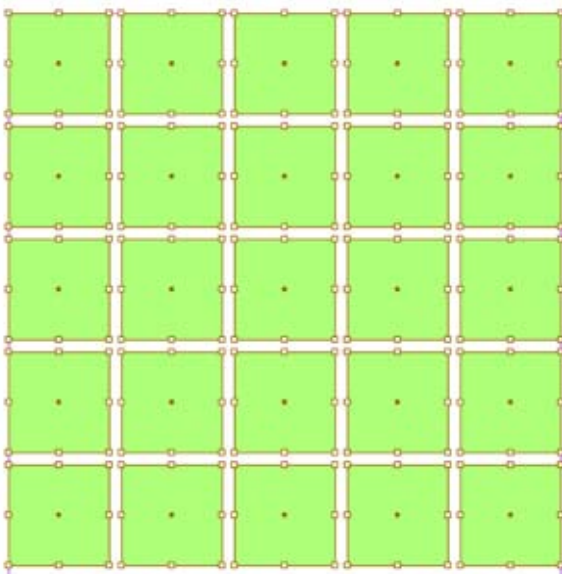
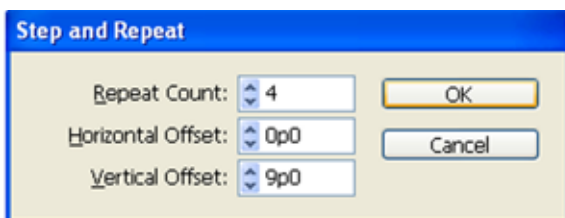
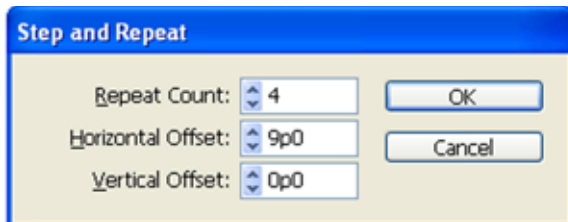
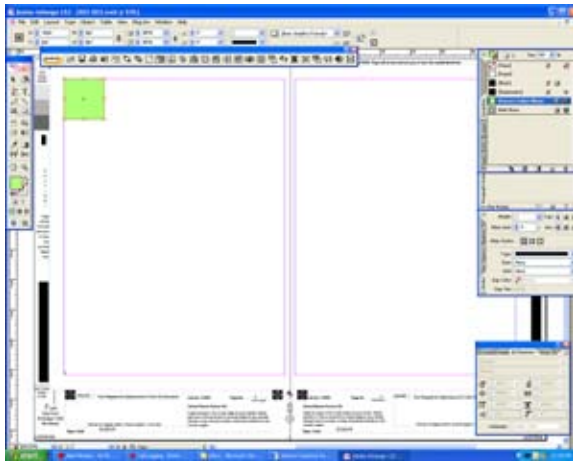
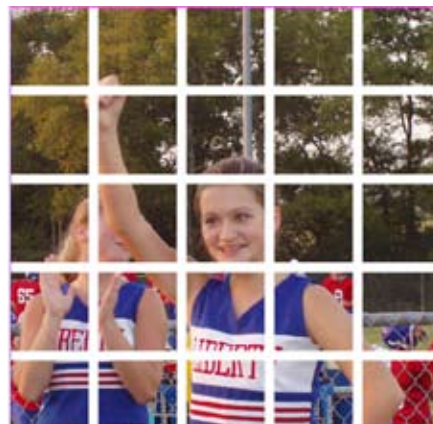


InDesign Window Pane

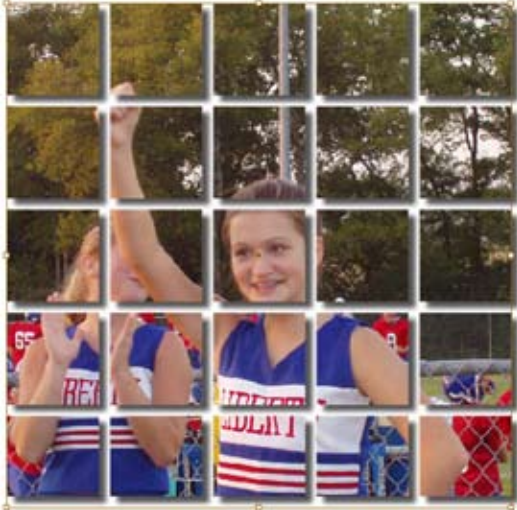


1. Use the **Rectangle tool** to create the first element you want to copy to make the window pane. Hold down the **Shift key** to make it a perfect square.
2. Click on the square with the **Selection tool**. From the **Edit menu** select **Step and Repeat**. Set the **Repeat Count** to one less than the total number of boxes you want in the row. Here we have created 5 boxes in the row, so our repeat count is 4.
3. To get a standard one-pica space between the boxes, set the **Horizontal Offset** to one pica more than the Width of the box. Our box is 8 picas wide, so our **Horizontal Offset** is 9p0. If you want a different distance between boxes, add that increment to the width of the box.
4. Set the **Vertical Offset** to 0 and click **OK**. You will get a complete row of boxes.
5. Next, the columns: Use the **Selection tool** and the **Shift key** to select all of the boxes. Open the **Step and Repeat** window from the **Edit menu**. Set the **Repeat Count** to one less than the total number of boxes you want the columns. We've used 4 again to get 5. This time, the **Vertical Offset** should be one pica more than the Height of the box. Set the **Horizontal Offset** to 0. The columns will appear and you will have equally sized and spaced boxes.
7. Use the **Selection tool** and the **Shift key** to select all of the boxes. Go to **Object/Compound Paths/Make**. This will convert the boxes to a single element.
8. Now use **Picture Placer** to place your photo. Use the **Direct Select tool** to adjust the position of the photo within the box.

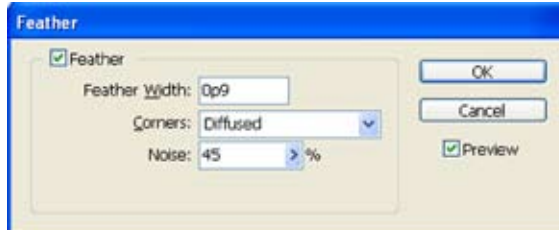
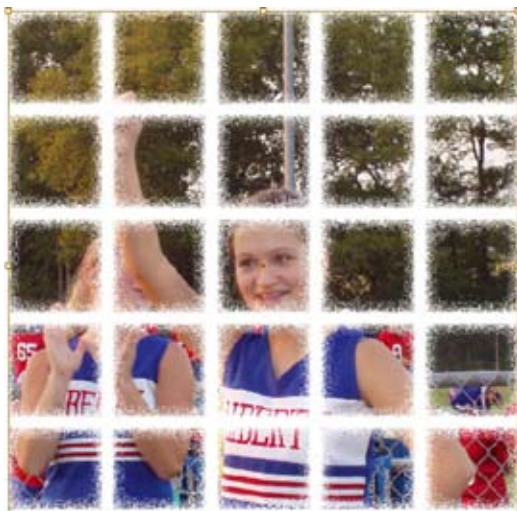


InDesign Window Pane

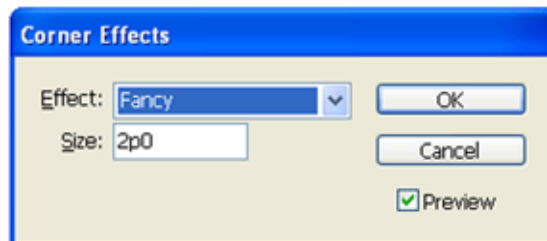
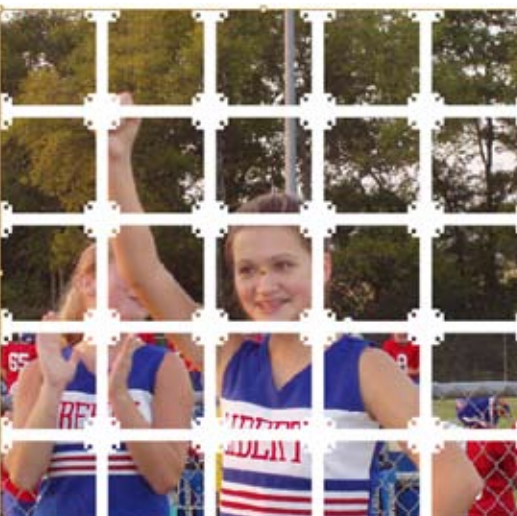
Experiment by applying different effects to the Window Pane.



This is an example showing a drop shadow.



This is an example showing Feathering with Noise applied.



This is an example showing Corner Effects.